

# Daniel

Traditional; adapted by Ken Whiteley and Raffi

Moderately

F6



Dm7



D♭7



C7



F



C7



F



1. Dan - iel in the  
2. Prom - ised that you'd

B♭



li - on's den, \_\_\_\_\_ Dan - iel in the  
ans - wer prayer, \_\_\_\_\_ You prom - ised that you'd

Bb7



F

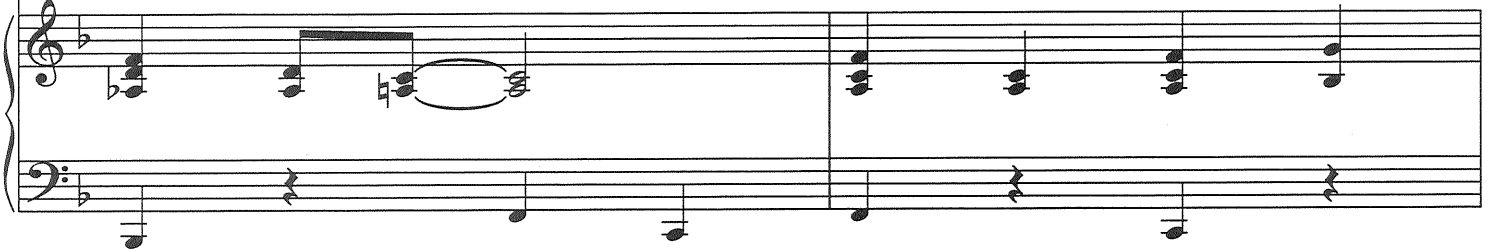


C7



li - on's den,  
ans - wer prayer,

You Dan - iel in that the  
prom - ised you'd



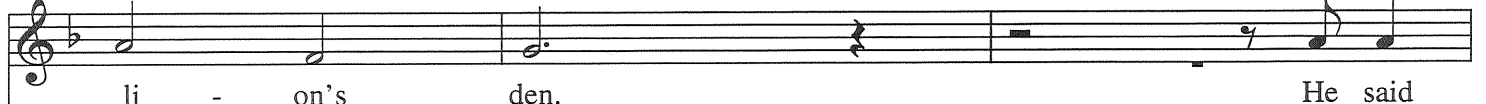
F



Dm



C7



li - on's den.  
ans - wer prayer.

He said



F



now is the need - ed time,  
Lord, won't you come by here? Oh,



Bb



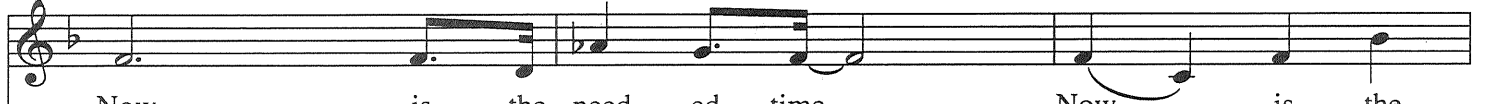
Bb7



F

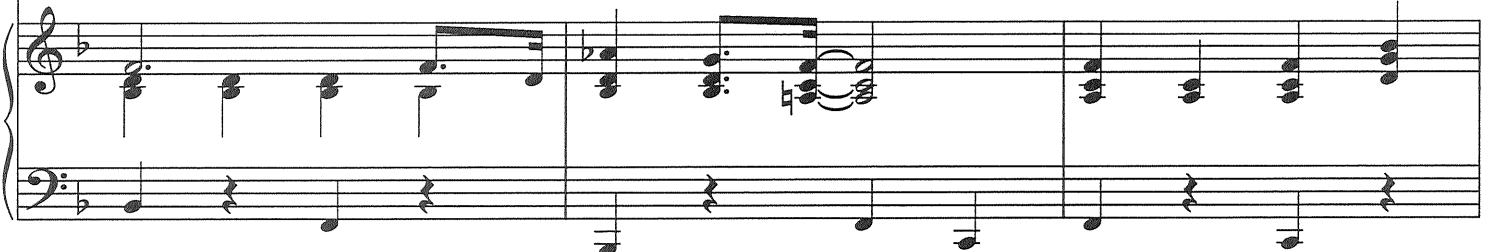


Gm



Now is the need - ed time,  
Lord, won't you come by here?

Now is the  
Lord, won't you



1. - 3.

Dm C7 F C7/G F

need - ed time. 2. Well, you  
come by here? 3. And then  
4.

4.

Dm C7 F C7/G F

rall.

*Additional lyrics*

3. And then God, he sent the angel down,  
Yeah, God, he sent an angel down,  
God sent an angel down. (*Yes, he did.*)  
And the angel locked the lion's jaw,  
Oh, the angel locked the lion's jaw,  
The angel locked the lion's jaw.

4. Mm \_\_\_\_\_,  
Mm \_\_\_\_\_,  
Daniel in the lion's den.  
(*Can't you see him in the lion's den.*)  
Mm \_\_\_\_\_,  
Oh, Daniel in the lion's den,  
Daniel in the lion's den.